



Welcome to

Key Stage 1

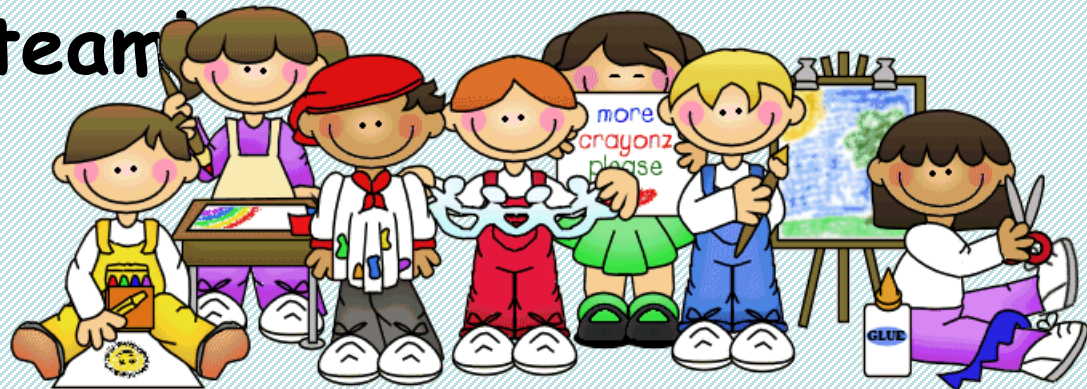
Minds to learn, Hearts to care

Class Organisation

From September 2017, children in Year 1 will be grouped into 3 classes.

Transition day all children will meet their new Class Teacher.

Meet the Year 1 team

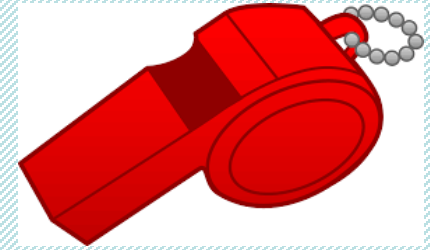


Meet the KS1 team

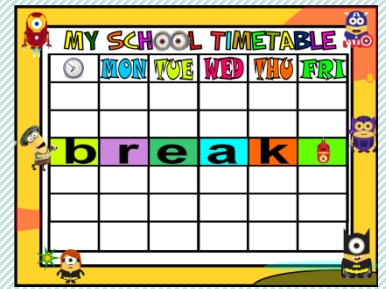
- Mrs Hoyle - (KS1 Worship/Spirituality/RE Lead)
- Teaching Assistants- Mrs Wakenshaw/Mrs Larkin
- Mrs Mackay - (Science Lead)
- Teaching Assistant - Mrs Cuthbert

- Miss Thompson - (Shadow Maths Lead)
- Teaching Assistant - Mrs Hitchen

Daily Organisation for September



- The school gates open 8.20 am. Children and parents meet on the playground until 8.40 am when the school begins.
- A member of staff will be on early morning duty on the playground.
- When the bell rings, the children enter school via the Year 1 door. They will be greeted by the Teaching Assistants in KS1.
- Lunchtime is from 12.00pm - 1.15pm. All children eat together in Cuthbert Hall Building.



- **8.40am: School Opens**
'Early Bird' Activities
- **8.45am: Following registration learning begins**
- **10.20am: Break Time (Snack time)**
- **10.40am Second Teaching Session**
- **12.00pm: Lunch Break**
- **1.15pm: Third Teaching Session**
- **3.00pm: School Ends**

End of Day

Always end the day
with a positive thought.
No matter how hard
things were, tomorrow's
a fresh opportunity
to make it better.

—Unknown

16quotes.com

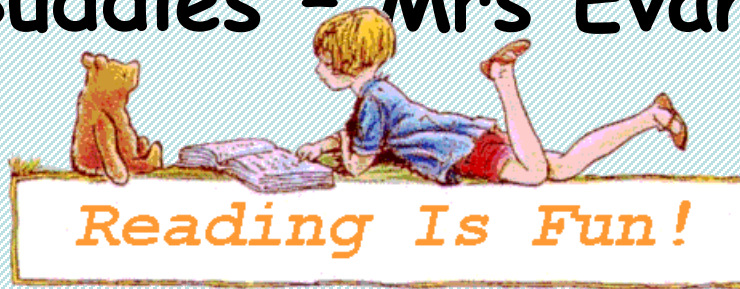
- The end of day in Key Stage 1 is 3.00pm. Children in Classes 4 and 5 will be handed over from their Classroom fire door. Children in Class 6 will be brought on to the playground and handed over by their Teacher to their parent/carer.
- Teachers will be available should you need to speak to a member of staff.
- If, for some reason, someone different is picking your child up, please inform your child's teacher or write in the Home/School Planner

Communication

- Open door policy
- Daily conversations through Home/School Planners
- Teachers are available before/after school
- Speak to your child's Class Teacher first
- Speak to Mrs Hoyle (KS1 Leader)
- Speak to Mrs Wild/Miss Huddart (Head Teacher/Deputy Head Teacher)

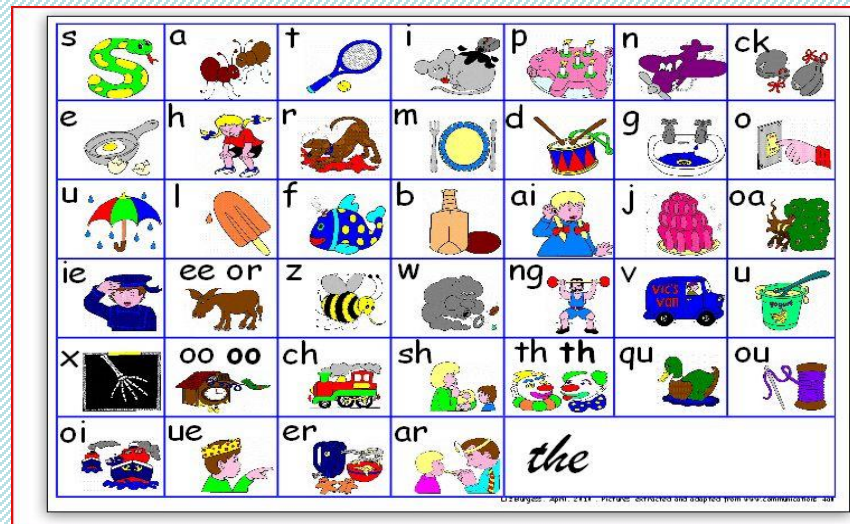
Reading

- Your child will take a levelled reading book home over each night.
- Planners must be signed by an adult with a comment and page number.
- Reading ages (Sept/Oct)
- Reading Buddies - Mrs Evans/Year 6 children



Phonics

- Phonics taught everyday
- Phonic Screening June 2018
- Prior's Mill - Outstanding pass rate!

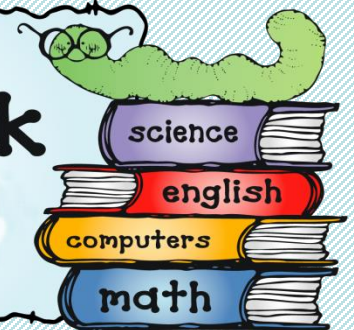


Homework

- Weekly spellings
- Linked to Phonics
- Tested every week
- Occasionally Extra homework



Homework



Home Guides/Newsletters

- Termly Home Guides
- Curriculum Information
- Newsletters - Weekly - Web-site
- Texting
- Check school bags for letters



Tooth brushing

- Tooth brushing everyday after lunch
- Routine
- Links to English instruction writing



School Ethos



- Strong Christian ethos, embedded throughout the school
- Weekly Worship theme linked to our Christian Values (peace, trust, hope)
- Worship everyday - Whole school/Key Stage/Circle/Hymn/Celebration
- Class Worship each term
- Family Worships - Eucharist/Harvest/Christmas/Easter/Prayer Spaces

Medical Matters

- Any sickness, diarrhoea, must be followed by 48 hours absence.
- Head lice are common! Please check regularly and treat as recommended.
- Any absence requires a note or telephone call explaining why. School attendance target is **96%**
- Any medicines can only be administered by prior arrangement with the school



Our School Uniform is :

Boys

Royal Blue knitted jumper/cardigan

White shirt with royal blue and gold clip on or elastic tie

Black tailored trousers or knee length black shorts

Black shoes

Black socks

Girls (as above) or

Oakleigh fabric pinafore/Oakleigh fabric kilt style skirt

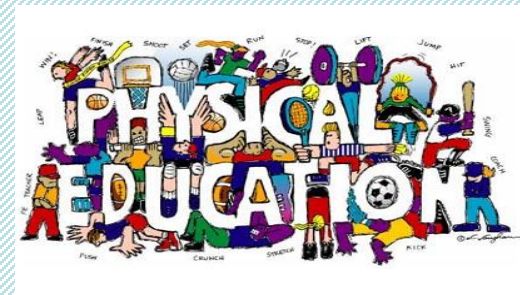
Blue gingham dress (Summer)

Black shoes or sandals (Summer not open toed)

Black or White socks/tights

P.E. Black shorts/Black T Shirt/Black plimsolls

(Please name all uniform/kit)



Transition Day

We are really looking forward to meeting the children on

Tuesday 4th July



Organisation for the day

- Children to enter school as normal through the Reception 'Learning Garden'
- Children will be then registered in their normal Reception classes and then will be greeted by their new teacher and then brought into their new Year 1 class.
- Children will then spend the day doing activities with their new teacher.
- At the end of the day the children will be dismissed from the Reception 'Learning Garden' as normal.



In General

We operate an open door policy and are always pleased to see any parents or carers requiring information or advice.

We hope your child's transition to KS1 will be smooth but if there are any concerns or worries please feel free to contact the team to discuss them.

We are looking forward to sharing your child's continued progress and achievements with you.

